



LANSINGBURGH HISTORICAL SOCIETY

Newsletter Annual Report

1984-1985

OAKWOOD CEMETERY RECEIVES HISTORIC REGISTER DESIGNATION

Historic Oakwood Cemetery, located almost entirely within Lansingburgh, "in recognition of its significance in American history and culture," was listed on the State Register of Historic Places on August 3rd, 1984. On the same date it was nominated to the National Register of Historic Places. Previous Register designations had been awarded to the Morey-Powers mansion and the Lansingburgh Academy.

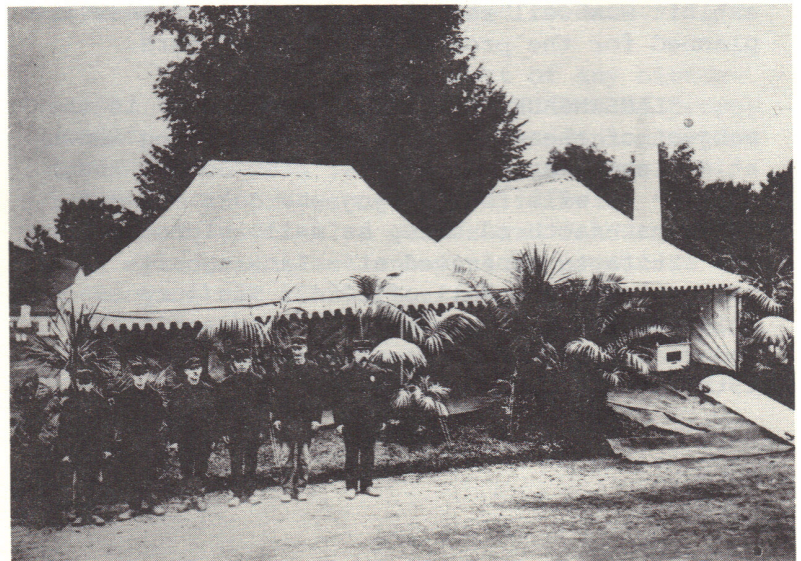
The Troy Cemetery Association met on Sept. 9, 1848 to organize and plan a rural cemetery for western Rensselaer County. As early as 1833, Lansingburgh horticulturist Alexander Walsh had been a proponent of landscaped park-like "rural cemeteries." Soon after the Association was incorporated, they purchased three parcels of land, which had comprised part of the Winne and Vail farms. landscape architect J.C. Sidney of Philadelphia was hired to design the new Oakwood Cemetery. His original manuscript map is held on permanent loan by the Lansingburgh Historical Society.

Originally the main entrance was on Oakwood Avenue, but a covered bridge was constructed over the then Fitchburg railroad tracks at the head of Cemetery Avenue (101st St.) in 1872, and the present Office was erected. This unusual wooden structure over the tracks burned in 1963.

There are presently 625 acres in the Cemetery, which includes 2 streams, 4 waterfalls and 5 ponds. There are 29 miles of roads and 24 private mausoleums. The most outstanding of these is the Warren Chapel, designed in 1860 by Henry Dudley, and enlarged in 1883. The Gardner Earl Memorial Crematorium, completed in 1890, has long been considered an architectural gem.

A number of nationally known persons are buried in Oakwood. These include Emma Willard, Generals George C. Thomas, Joseph B. Carr and John E. Wool. The latter's grave is marked by a stunning 60 foot high granite obelisk, clearly visible from the valley below. Well known persons whose remains were reinterred here include the founder of Lansingburgh, Abraham J. Lansing, "Uncle Sam" Wilson and members of Troy's Vanderheyden family. Oakwood contains a number of former private burying grounds, and one used in early years by Troy's Quaker faith.

Oakwood Cemetery is renowned not only for its scenic location overlooking the confluence of the Hudson and Mohawk Rivers, but also its remarkable statuary and cemetery art, in marble, granite and bronze. The Cemetery Office maintains a wide range of important records dating to its organization 137 years ago. The Oakwood is open to the public from 9 AM to 4:30 PM daily. Maps, brochures and other related materials are available at the Cemetery Office. For additional information, contact Superintendent Janice Senser at 272-7520, or write the Cemetery at Head of 101st St., Troy, NY 12180.



LANSINGBURGH HISTORICAL SOCIETY

NEWSLETTER AND ANNUAL REPORT: 1984-5

This Newsletter is an official publication of the Lansingburgh Historical Society, 2 114th St., P.O. Box 219, Lansingburgh, Rensselaer County, New York 12182. The Society was founded in 1965 and has a permanent charter from the Regents of the State of New York. Officers and Trustees for the past season were:

President: Kathleen Tivnan
Vice-President: Warren F. Broderick
Secretary: Byron Moak
Treasurer: Richard Zeller
Historian: Frances Broderick
Corresponding Secretary: Harriet Finnegan
Program Chairperson: Shirley Parker

Trustees (in addition to offices listed above) are Agnest Ernest, Maurice Corbin, Helena English, Lois Norton, Rita Darfler, Helen Ciavardoni and Barbara Carlo. The Society's headquarters is open by appointment, by calling 235-7647, 235-7828, 235-4099 or 235-4041.

EXHIBITS

"A CENTURY OF CLOTHING MANUFACTURE," the history of the 100th anniversary of the construction of the United Shirt & Collar factory, was on exhibition during 1984-5 at the Marine Midland Bank, Norstar Bank and Lansingburgh Branch of the Troy Public Library. Prepared with the assistance of Standard Manufacturing Company, the exhibit showed the continuous use of the block-long brick factory for two distinct kinds of clothing manufacture. The exhibit was well received, and similar ones are planned for the present and future years.

"LANSINGBURGH POTTERY & STONEWARE" is the subject of the exhibit for 1985-6, being shown at the same three locations, from June through April. It will feature jugs, crocks and other wares manufactured here, as well as photographs and artifacts excavated at a Lansingburgh pottery site in the fall of 1984. The purpose of this exhibit is to increase awareness in the importance of the stoneware industry to mid-19th century Lansingburgh.

PROGRAMS & EVENTS

The monthly programs for 1984-5 were:

Sept.: Carl Grimm: East Africa
Oct.: Warren Broderick: Early Stone Sites
Nov.: Diane de Blois: Early Postal History
Dec.: Christmas party and auction
Jan.: G. Steven Draper: Take Me to the Depot
Feb.: Betty McClave: Stephentown's Bicentennial Celebration
March: Gary Mercer: Digging for Old Bottles
April: Warren Broderick: Joseph Hidley
May: Paul Lear: Archaeological Investigation
June: party at Dick Zeller's

"Lansingburgh Day" was held on Wednesday, June 19th at Riverfront Park in downtown Troy. The Lansingburgh Historical Society had a booth, staffed by Rita Darfler and Helen Ciavardoni. Our publications were available for the interested public.

An OPEN HOUSE will be held on Saturday, September 14th, from 10 AM to 4 PM. A PORCH SALE will be conducted as well, and those wishing to donate items for the sale can contact Society officers this summer. The antique & collectible RAFFLE will be held that afternoon, and a WALKING TOUR of historic Lansingburgh will also take place. For details of the tour, contact President Kathleen Tivnan at 235-7647. Anyone wishing to donate items or work at the sale can contact Rita Darfler at 235-3068 or Helen Ciavardoni at 235-7330. Chances for the raffle cost \$1.00 each, and are available at the Brownstone, Sally's Variety Outlet, or from Society members.



THE WOOL MONUMENT, IN PROCESS OF ERECTION.

COLLECTIONS

A number of important items were added to the Society's collections during the past year. Major purchases included terra-cotta and molded stoneware jardinières, a DeFreest lemon beer bottle, an Albany-slip crock made by James Reiley, a green Steuben vase owned in the Pine family, the *Book of Styles* of the United Shirt & Collar Co. and a major reference work, *Views and Viewmakers of Urban America*, listing all known panoramic views, including the Society's collection.

Significant donations include a collection of over 60 pamphlets relating to Lansingburgh, from Frances Broderick; a watercolor by C.G. Davidson and a cape with jet trim, from Willis Hasting and Joseph Colliano, of North Truro, Mass.; small table with brush-making apparatus, from Martha Carpenter; 7 maps of lower Lansingburgh, 1842-1906, from an anonymous donor; miniature bible published in Lansingburgh in 1820, from Warren Broderick and an unusual stoneware crock with incised inscription, "G.H. Weaver, Lansingburgh, N.Y.," from Ferris Scoville, Red Bank, N.J. Other donors included Agnes Ernest, Barbara Bates, Donald Murray, Gary Mercer, Elmo Mollnow, Richard Zeller, Aura Webster, S. Whitford Noble, Edward Spain and Mr. & Mrs. Thomas Thornbury.

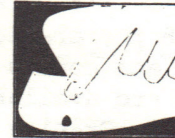
The Society received on permanent loan from the Troy Cemetery Association, a hand-colored sketch of the ornamental iron bridge which formerly stood in Oakwood Cemetery, drawn in 1876 by G.S. Davison, an R.P.I. Engineering student.



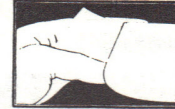
TO THE TRADE

It is a proven fact that Lion collars are superior to all other makes in style, fit, and wearing qualities. Lion features (illustrated below) have created a consumer demand that make them most profitable as the one line for the dealer to stock. This catalogue contains illustrations of 88 distinct Lion Collars, each one designed to properly fit the wearer, and all guaranteed to be made from thoroughly tested materials pre-shrunk.

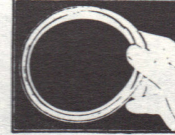
LION FEATURES



This oval buttonhole is made with a re-inforced cable cord, it holds the collar in place, fastens and unfastens easily and wears as long as the collar.



The lock-that-locks is a sharp point that fits in the collar fold and holds the top in place.



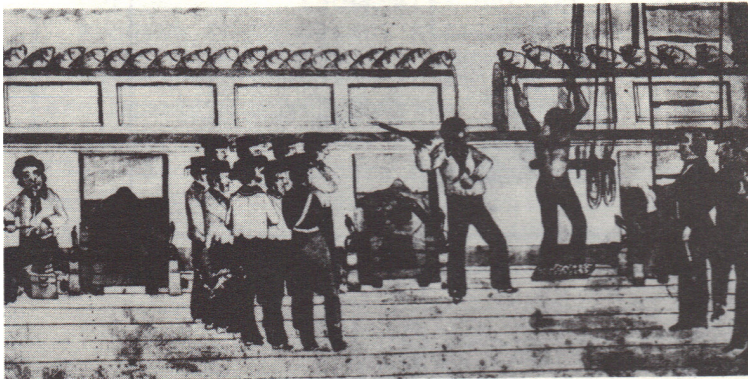
The easy-tie-slide space is a uniform channel between the top and band of Lion fold collars which permits the scarf to slide easily.

The Society had taken responsibility for the care of artifacts excavated at the site of the Thayer/Reiley pottery in 1984. These include sherds, kiln "wasters," a kiln brick, stoneware "marbles" and a miniature redware jug. The 1860 Bevan Map of Lansingburgh, donated by H. Irving Moore, was restored by Northeast Documents Conservation Center. No other copy of this important map has been located to date.

Vital to the management of any historical collection is the maintenance of proper collections records. An accessioning system was implemented in 1984, and an item-level inventory of the collection is being taken. Ultimately detailed guides and finding aids to all our collections will be produced, to aid in their identification and use. A *Guide to the extensive manuscript collection* will be the first one completed.

HERMAN MELVILLE: DAMNED IN PARADISE

This 90 minute documentary, produced by The Film Company of Washington, DC, was first aired on television this past May. Narrated by John Huston, the film concentrates on the author's South Sea travels. Included is a brief scene filmed in Lansingburgh, featuring the Society headquarters, Melville Park and the Hudson River. A copy of the transcript was donated to the Society, and copies of the illustrated companion Guide are available from the Society for \$7.00 a copy. Critics have called this documentary film "one of the finest of its kind" in its authenticity.



LANSINGBURGH HISTORICAL SOCIETY
2 114TH STREET (P.O. BOX 219)
LANSINGBURGH (RENSSELAER COUNTY)
NEW YORK 12182

JOIN THE LANSINGBURGH HISTORICAL SOCIETY

No application is necessary! Just send \$5.00 for regular membership, \$25 for sustaining or \$100 for life membership, to us at P.O. Box 219, Lansingburgh, NY 12182. You will be notified in writing of each monthly program and of special events, and will receive the *Newsletter* and other mailings. Members who join after Sept. 1st will be credit with the additional half-year's dues.

The following items are still available:

| | |
|--|--------|
| LANSINGBURGH 1771-1971 | \$2.00 |
| LANSINGBURGH'S KITCHEN GOODIES | \$1.50 |
| L.H.S. NOTEPAPER (package of 10) | \$2.50 |
| HARDWOOD BRUSHBACKS | \$1.00 |
| same, with BRONZE MEDALLIONS | \$4.00 |
| HARDWOOD MIRRORBACKS | \$3.00 |
| H.I. Moore, GREAT FIRE OF TROY | \$5.00 |
| HERMAN MELVILLE: DAMNED IN PARADISE | \$7.00 |
| Bowne, YE COHORN CARAVAN (Gen. Knox) | \$5.00 |
| Waite, ARCHITECTURE OF LANSINGBURGH (out-of-print, when a copy is available) | \$10. |

FIRST CLASS MAIL